

螺栓连接AC/DC熔断器

Bolt Connected AC/DC Fuse

基本参数/Rated Characteristics



RGS AC690V/DC500V series

额定电压/Rated Voltage: AC690V/DC500V

额定电流/Rated Current: 20–630A

分断能力/Interrupting: AC80kA/DC50kA

执行标准/Standard: IEC 60269–4

使用类别/Class of Operation: aR

尺寸/Dimensions–mm

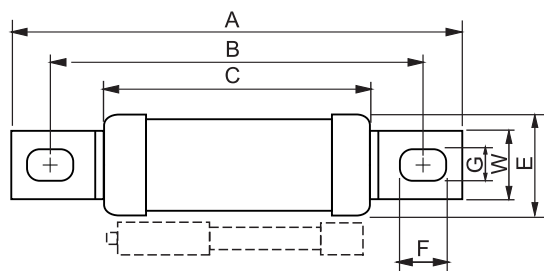


图1

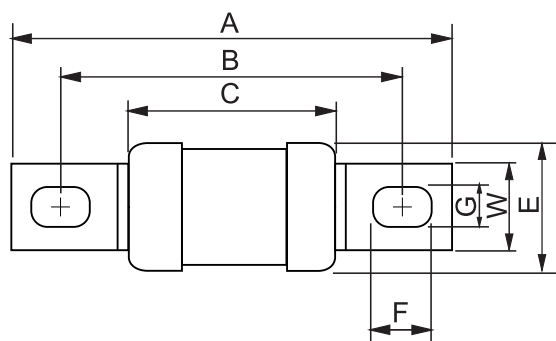
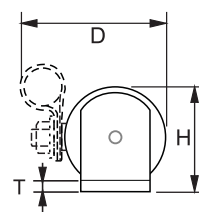
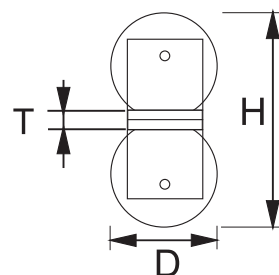


图2



* 带指示的型号加“X”

* The indicator type is add the 'X' after the no indicator type name.

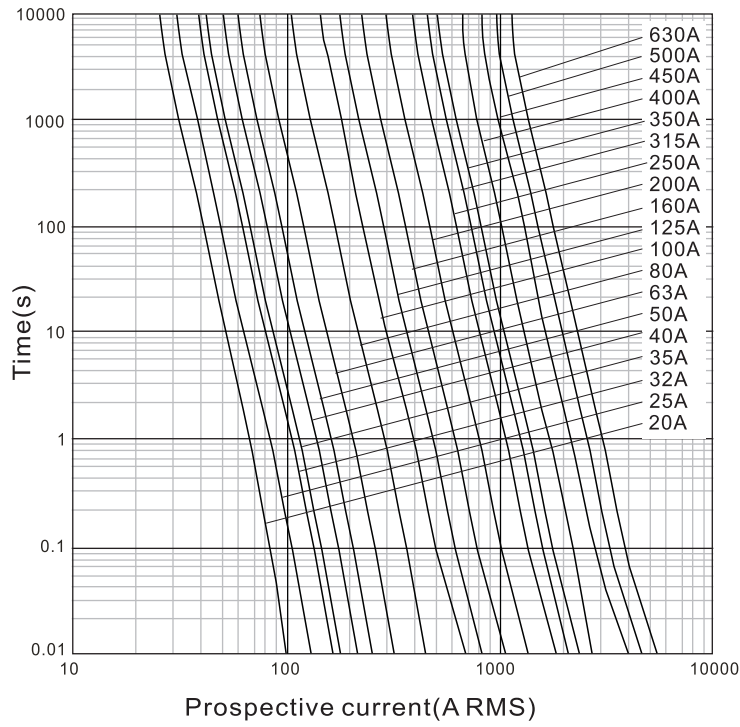
尺寸/Dimensions—mm

Product No.	Rated Current (A)	Dimension										FIG
		A	B	C	D	E	F	G	H	W	T	
RGS4-20	20	77.5	63±3	47.5	28 (max)	18	9.3	6.5	18.5	12	2	1
RGS4-25	25											
RGS4-32	32											
RGS4-40	40											
RGS4-50	50											
RGS4-63	63											
RGS4-80	80											
RGS4-100	100											
RGS4A-125	125	95	78±3	50	33 (max)	23	14	9	26	20	2	
RGS4A-160	160											
RGS4A-200	200											
RGS4B-250	250	108	81±4	52	40.5 (max)	30.5	16	10.5	34	25	2.5	
RGS4B-280	280											
RGS4B-315	315											
RGS7-350	350	106.5	79.5±3	54.5	48 (max)	38	15.8	10	41	25	3	
RGS7-400	400											
RGS77-450	450	106.5	79.5±3	54.5	38	38	15.8	10	82	25	6	2
RGS77-500	500											
RGS77-560	560											
RGS77-630	630											

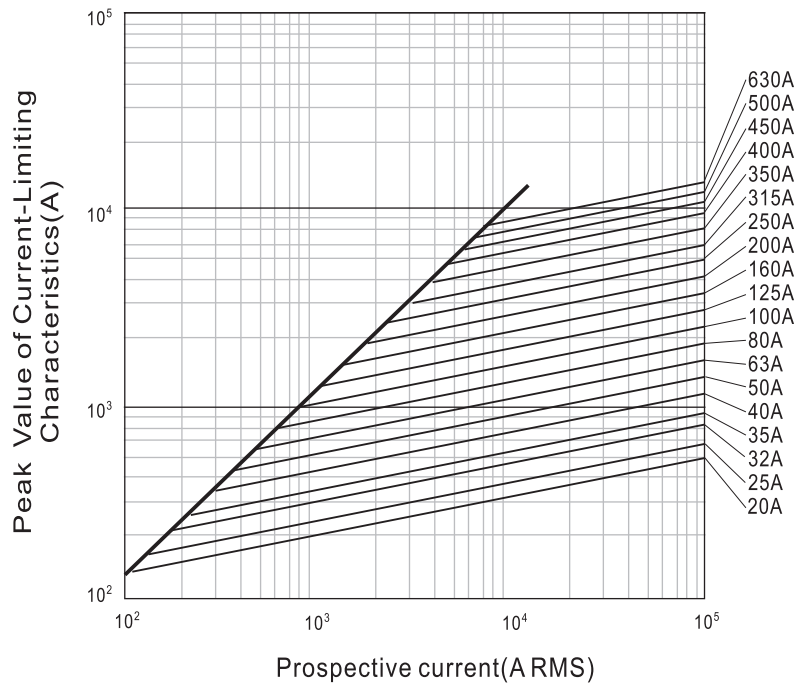
规格参数/specifications

Product No.	Rated Current (A)	Pre-arc I ² t (A ² s)	Total I ² t (A ² s)	Watts Loss (W)
RGS4-20	20	50	620	6.8
RGS4-25	25	60	750	7.3
RGS4-32	32	110	1300	10.0
RGS4-40	40	174	2200	14.2
RGS4-50	50	260	3650	16.2
RGS4-63	63	465	6303	18.5
RGS4-80	80	950	11585	23.5
RGS4-100	100	1525	18853	26.7
RGS4A-125	125	1045	9848	36.0
RGS4A-160	160	1385	10210	42.0
RGS4A-200	200	3535	25574	50.0
RGS4B-250	250	4800	32610	61.0
RGS4B-280	280	7323	58760	66.0
RGS4B-315	315	9486	75136	74.5
RGS7-350	350	13077	103378	79.0
RGS7-400	400	24644	204580	82.5
RGS77-450	450	33560	288369	78.0
RGS77-500	500	46639	399801	82.0
RGS77-560	560	64718	551233	85.0
RGS77-630	630	89797	762665	95.0

特性曲线/Characteristics Curve



Current Characteristics
时间电流特性图



Current-Limiting Characteristics
截断电流特性图